

Cockroach trap XL



Trap for German Cockroach and Oriental Cockroach

The traps are intended for monitoring the presence of German cockroaches and Oriental cockroaches by capturing them.

Effective against: *Blatella germanica*, *Periplaneta americana* and other cockroach species.



Cockroach trap XL

The traps are intended for monitoring the presence of German cockroaches and Oriental cockroaches by capturing them.

The traps are intended for monitoring the presence of German cockroaches and Oriental cockroaches by capturing them.

The trap contains attractant in glue, in a tablet or with granulate on the glue.

locations other than households, pest control company specialists select the trap set-up spots. *In the above places, it is recommended to set up the traps in protective housings.*

Operation:

The traps contain an attractant which is a blend of food substances. The attractant is in the form of a tablet. A smell is emitted in order to lure the insects to the trap.

How to use the trap:

For households, the traps should be located close to places most frequently visited by the insects. Those are places where food remains can be found or where the insects can access stored food products. The insects also stay often in places where access to water is ensured, e.g. next to water pipes, which are often covered with condensed steam. The traps should be set up next to walls, in room corners, i.e. on the routes the insects most often select.

Optimally, one trap protects up to 20 m² of the room area. When protecting

Conditions:

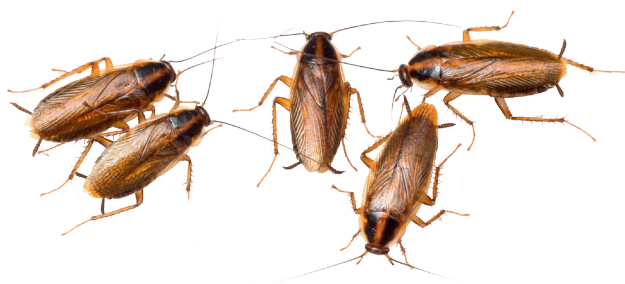
The traps maintain their optimum insect capturing performance in the temperature range from + 5°C to + 40°C. At temperatures exceeding 30°C, problems may arise when peeling off the paper that protects the adhesive surface. It is then recommended to place the trap in a fridge for around 20 seconds. After that, the paper will peel off smoothly.

Lifetime:

In the consumer pack, the trap lifetime is up to 36 months from the manufacture date. An unpacked and set up trap will normally remain active for 30-60 days. Its effective performance may be shortened by factors accelerating deactivation of the adhesive surface, such as high amount of dust in the air.



THE PRODUCT IS SAFE FOR
HUMANS AND PETS.
IT DOES NOT CONTAIN
HARMFUL SUBSTANCES



The new force, for Smart & Effective Monitoring Traps

panko[®] ALCOCHEM
HYGIENE

More information: Alcochem Hygiene • Tel.: +31 (0)33 299 4139 • www.insective.com • info@insective.com